

Gowest 


BRADSHAW PROJECT

***Environmental Studies and
Permitting for Advanced
Exploration***

Fall 2014

TSX-V:GWA www.gowestgold.com 1.877.363.1218

09/17/14

Outline **Gowest** 

- Introduction
- Project Description
- Permits and Approvals
- Baseline Studies
- Environmental Compliance Approvals
- Closure Planning
- Consultation, Engagement and Next Steps

TSX-V:GWA 2

Disclaimers **Gowest** 

This document (including any documents incorporated by reference herein) contains **“forward-looking statements”** within the meaning of applicable Canadian securities laws. These statements relate to future events or Gowest’s future performance. All statements other than statements of historical fact are forward-looking statements. Such forward-looking statements may include, but are not limited to, statements with respect to: (i) the future financial or operating performance of Gowest and its projects; (ii) the future price of gold or other metal prices; (iii) the estimation of mineral resources; (iv) proposed capital expenditures; (v) proposed operating and exploration expenditures; (vi) the costs and timing of future exploration and mine development activities; (vii) the success of exploration activities; (viii) permitting timelines and requirements; (ix) Gowest’s requirements for additional capital, (x) government regulation of mining operations; (xi) environmental risks; and (xii) title disputes or claims. Often, but not always, forward-looking statements can be identified by the use of words such as “plans”, “expects”, “is expected”, “budget”, “scheduled”, “estimates”, “forecasts”, “intends”, “anticipates”, or “believes” or variations of such words and phrases (including negative variations), or statements that certain actions, events or results “may”, “could”, “would”, “might” or “will” be taken, occur or be achieved.


Forward-looking statements involve known and unknown risks, uncertainties, assumptions and other factors that may cause the actual results, performance or achievements of Gowest to be materially different from any future results, performance or achievements expressed or implied by the forward-looking statements. Such factors include, among others:

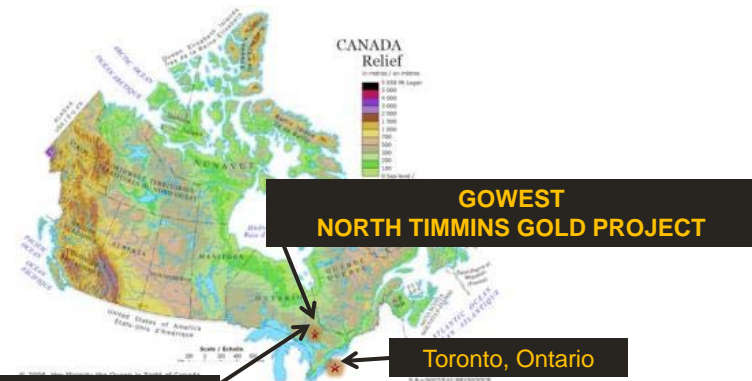
A number of factors could cause actual actions, events or results to differ materially from those described in forward-looking statements. There can be no assurance that forward-looking statements will prove to be accurate, as actual results and future events could differ materially from those anticipated in such statements. Gowest disclaims any obligation to update any forward-looking statements, whether as a result of new information, future events or results or otherwise, except as required by law.

The technical information in this corporate presentation has been reviewed and approved by Kevin Montgomery, Manager of Exploration, a QP as defined by National Instrument 43-101.

The industry data, technical information or other information prepared by third parties presented in this presentation, except where otherwise noted, has been compiled from industry sources and participants which, although not independently verified by the Company, are considered by the Company to be reliable sources of information. References in this presentation to reports or articles should not be construed as depicting the complete findings of the entire referenced report or article and such report or article is expressly not incorporated by reference into this presentation. The Company makes no representation or warranty as to the accuracy or completeness of any data or information prepared by third parties included in this presentation and the Company assumes no liability whatsoever relating to or resulting from such data or information or the use thereof, errors therein or omissions therefrom.

TSX-V: GWA 3

Project Location **Gowest** 



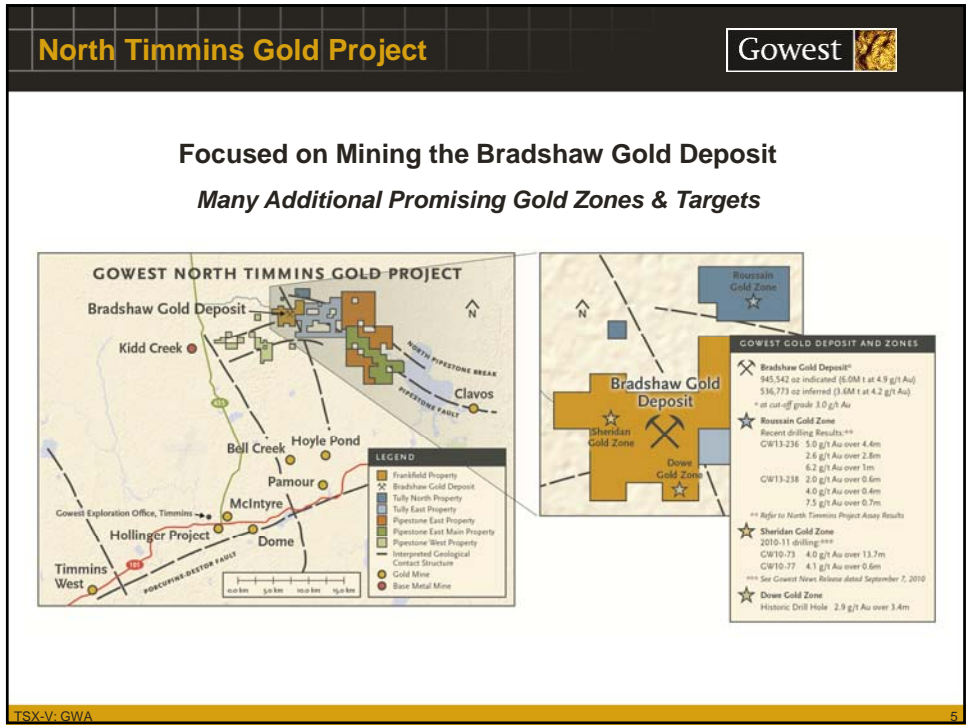
**GOWEST
NORTH TIMMINS GOLD PROJECT**


Toronto, Ontario

Timmins, Ontario Gold District


- Timmins/Abitibi: Canada’s most prolific Gold District
- +70 million ounces historic production (est. 48% of all gold in Canada)
- Includes several unexplored / underexplored areas
- Excellent community support & mining infrastructure

TSX-V: GWA 4





Site History and Current Land Use **Gowest** 


- Exploration activities (drilling) for the Bradshaw deposit were initiated by Gowest in the early 2000's
- No previous development of the site
- Current land use at the property and nearby properties is exploration and mining
- Recreational activities near the Project include hunting




Drilling activity on site

TSX-V: GWA 6

Project Description	Gowest 
<ul style="list-style-type: none"> ➤ Based on the drilling and modelling results from exploration activities, Gowest is proposing to enter Advanced Exploration ➤ Description: removal of 'bulk sample' to get enough information to make a decision about whether the Bradshaw Project can become a fully producing mine ➤ Key Project Activities: <ul style="list-style-type: none"> ➤ develop the ramp and sub-levels to access ore (~12 months) ➤ generation of ~ 30,000 tonnes of ore (<i>rock that contains gold</i>) and 200,000 tonnes of waste rock ➤ requirement of ~ 20 workers (10 office staff and 10 underground workers) 	 <p data-bbox="850 919 1003 936">Example of gold ore</p>
TSX-V: GWA	7

Project Phases	Gowest 
<ul style="list-style-type: none"> ➤ Prepare the site <ul style="list-style-type: none"> ➤ remove vegetation, peat and overburden ➤ Construct water management infrastructure <ul style="list-style-type: none"> ➤ runoff diversion berms, settling ponds, effluent discharge pipeline, and waste rock/ overburden stockpile pads ➤ Setup surface facilities <ul style="list-style-type: none"> ➤ offices, power generation and distribution system ➤ Excavate mine portal and overburden material from the ore stockpile footprints ➤ Continue surface exploration drilling ➤ Develop access ramp to the deposit ➤ Begin underground exploration and development drilling ➤ Collect underground samples and transport them for processing 	
TSX-V: GWA	8

Supporting Infrastructure




On Site

- Stockpiles for ore, waste rock and overburden at the surface
- On-site crushing
- Mine water treatment and settling ponds
- On-site access road upgrades
- On-site diesel generators
- Temporary building – office, dry, garage, maintenance
- Explosives and fuel storage facilities

Off Site


- Processing
- Potable water brought to site
- Solid waste and sewage sludge hauled off site

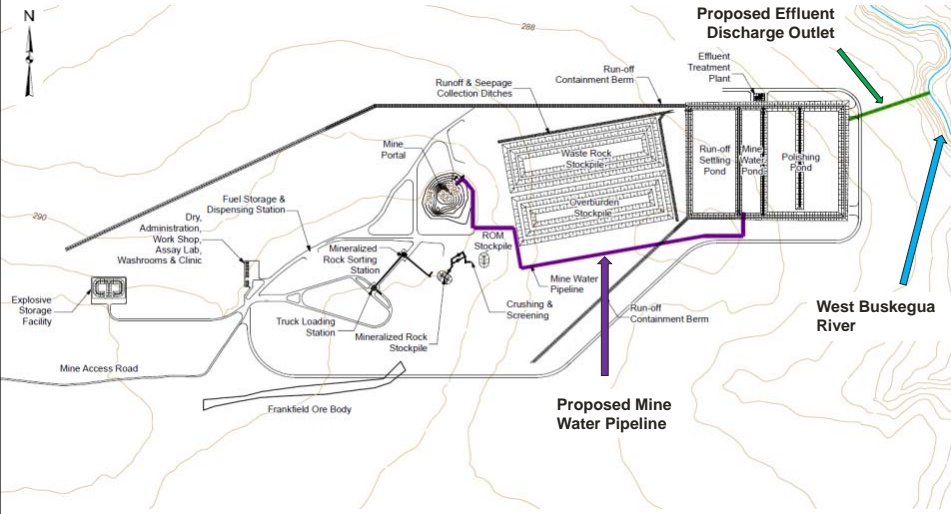


On site road upgrades will be required

TSX-V: GWA
9

Bradshaw Project - Site Plan





TSX-V: GWA
10

Permits and Approvals Gowest

- For Gowest to move into Advanced Exploration, the Project requires a number of environmental permits and approvals
- Key permits and approvals include:
 - Environmental Compliance Approval (industrial sewage and air and noise)
 - Permits to Take Water
 - Advanced Exploration Closure Plan
- A proposed schedule for Project activities is described below


2014		2015											
November	December	January	February	March	April	May	June	July	August	September	October	November	December
Aboriginal and Public Consultation													
Permits and Approvals													
		Portal/Ramp Development											
								Bulk Sample Collection					

TSX-V: GWA
11

Environmental Baseline Studies Gowest

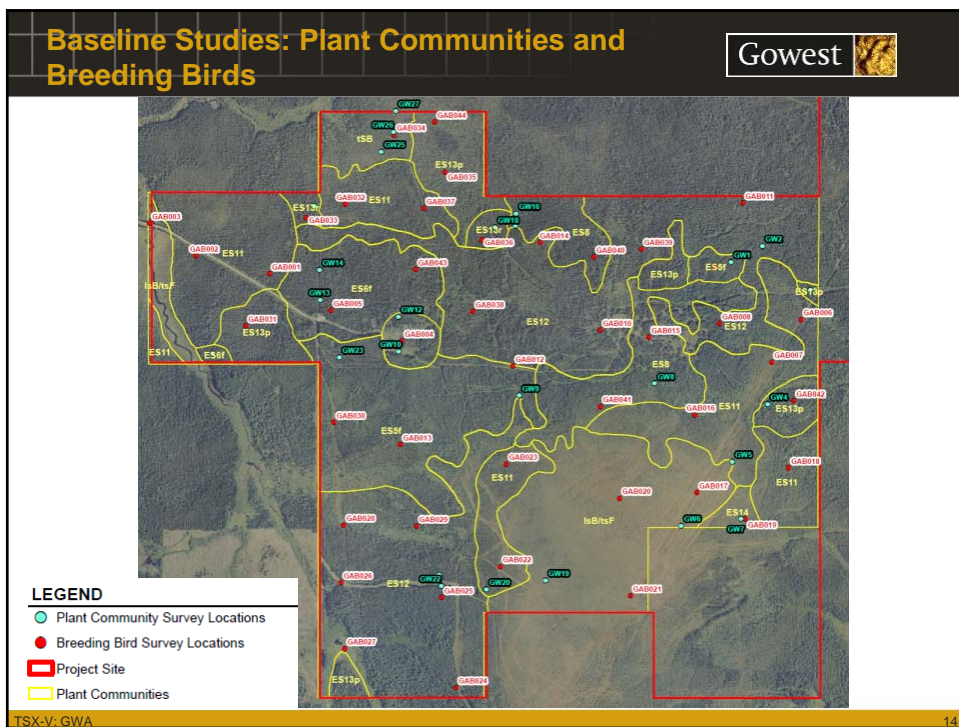
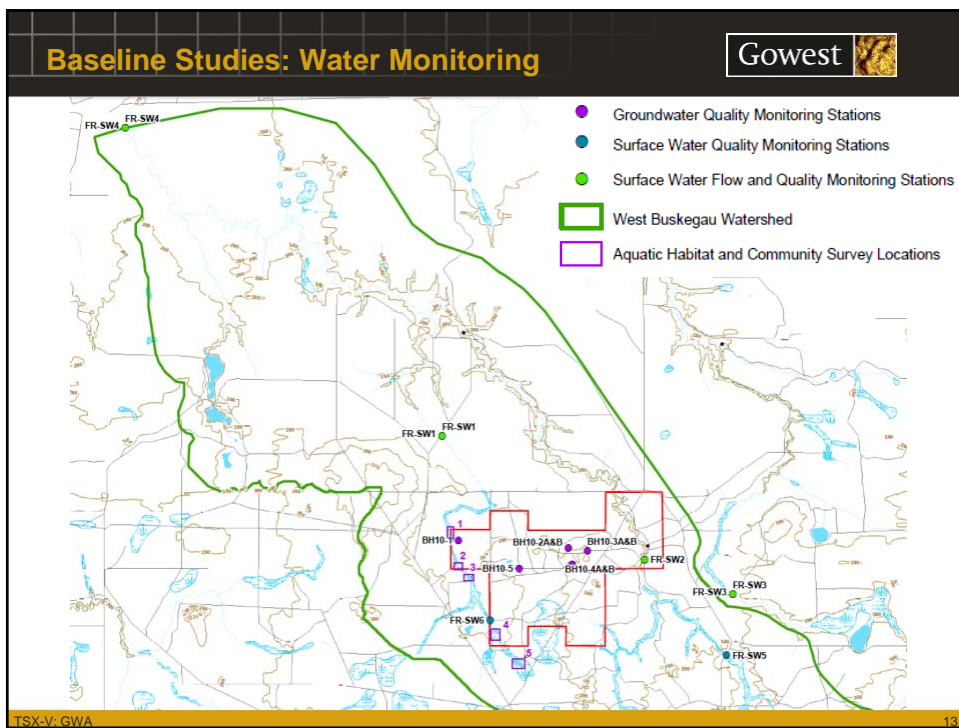
Baseline studies are an important part of environmental studies required for permitting and approvals – they are done to understand the existing environment so that we can predict how a project may affect the environment

- The following baseline studies were carried out to better understand the existing environment at the site
 - Hydrogeology / Groundwater Quality
 - Hydrology / Surface Water Quality
 - Geochemistry
 - Aquatic Habitat and Community Surveys
 - Terrestrial Plant Community and
 - Wildlife Surveys



Photos from Aquatic Baseline Program

TSX-V: GWA
12



Environmental Compliance Approvals (ECA)



- ECAs are approved by the Ministry of Environment and Climate Change
- An ECA application shows that Gowest is complying with environmental laws specific to potential effects of the Project
- ECA (Air and Noise):
 - Air quality modelling is done to predict the effects of the Project on existing air quality
 - Noise assessment is done to predict the effects of the Project on existing noise levels
- ECA (Industrial Sewage Works):
 - Water management study and water quality modelling is done to predict the effects of the Project on existing water quality and flows
- The ECA applications are ongoing – the Project will comply with all provincial regulations and guidelines for air quality, noise and sewage works

TSX-V: GWA

15

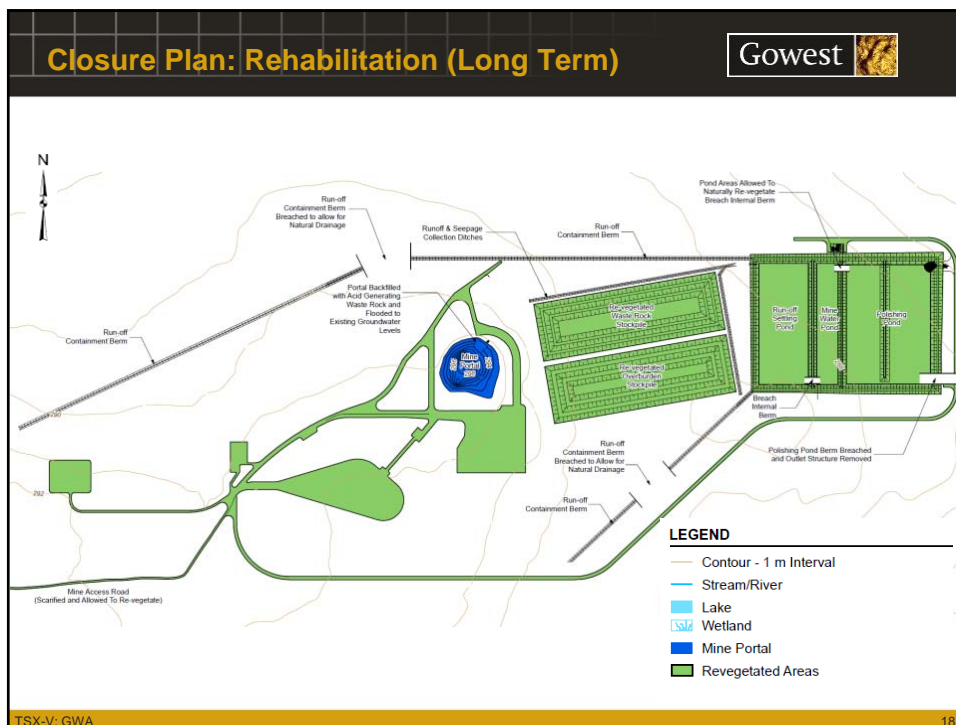
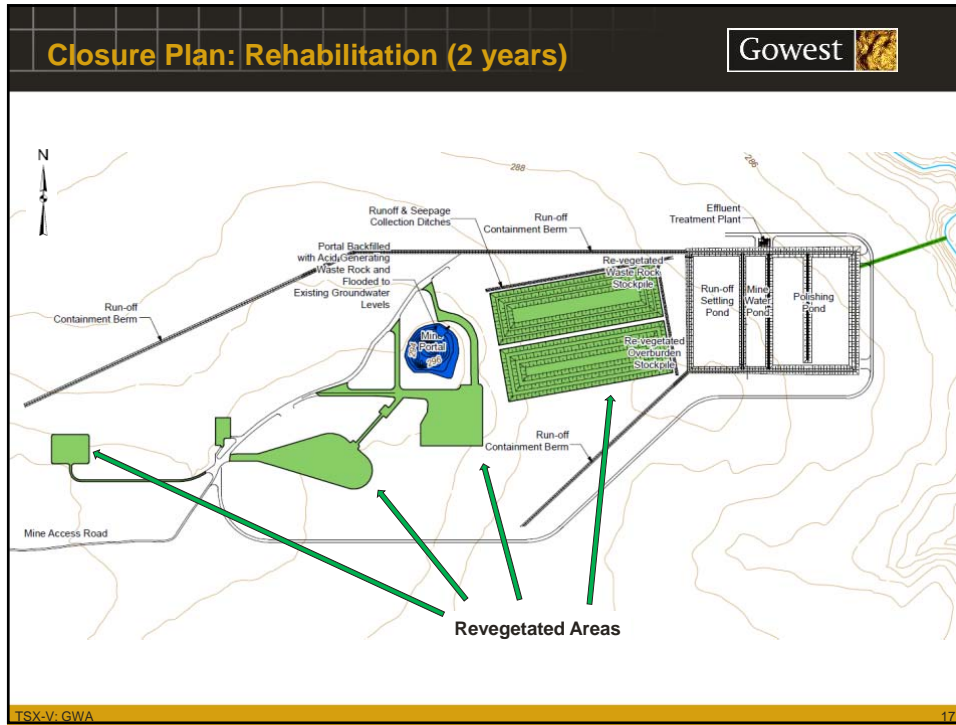
Closure Plan



- Closure Plans are approved by the Ministry of Northern Development and Mines
- The purpose of a closure plan is to show a proponent's plan for the Project site if/when the Project is suspended, inactive or closed out
- A Closure Plan has the following key components:
 - Description of the existing site conditions and proposed project
 - Rehabilitation activities in the case of project suspension, inactivity or close out
 - Requirements for post-closure environmental monitoring
 - Expected post-closure site conditions
 - Cost estimates and financial assurance for closure activities

TSX-V: GWA


16



Closure Plan: Expected Land Uses Gowest

Based on the environmental studies done to support the permits and approvals, anticipated environmental impacts are expected to be small following closure

- Once permanent closure activities are complete, land use is expected to be restored to conditions similar to now
- Surface water and groundwater quality will be monitored until acceptable water quality is achieved
- Groundwater levels at the mine site will return to its natural level (monitoring will confirm this)
- Once revegetation occurs, the area could ultimately support predevelopment recreational activities (e.g., hunting)



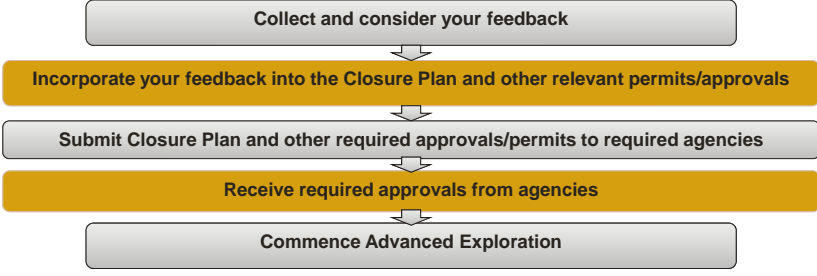
TSX-V: GWA19

Consultation, Engagement and Next Steps Gowest

Consultation and Engagement

- Your feedback is exceptionally important to us
- We are looking for your input on our Project and how you think it could impact your community, including traditional practices such as hunting, trapping, gathering and harvesting
- We are also looking for your advice on how we can continue to consult, engage and involve you in the process

Next Steps



```

graph TD
    A[Collect and consider your feedback] --> B[Incorporate your feedback into the Closure Plan and other relevant permits/approvals]
    B --> C[Submit Closure Plan and other required approvals/permits to required agencies]
    C --> D[Receive required approvals from agencies]
    D --> E[Commence Advanced Exploration]
    
```

TSX-V: GWA20

Contact Information



Officers & Directors

Greg Romain, *President & CEO, Executive Director*
Janet O'Donnell, *CFO*

Technical Team

Kevin Montgomery, *Manager of Exploration*
Garth Wilcox, *Project Development Manager*



Gowest Gold Ltd.

80 Richmond Street West, Suite 1400
Toronto, Ontario
M5H 2A4

Toll Free 877.363.1218

Telephone 416.363.1210

Email: info@gowestgold.com