



HIGHLIGHTS: DRIVING VALUE

GOWEST is a Canadian resource company focused on expanding, developing and mining its 100% owned Frankfield East Gold Deposit, part of its **North Timmins Gold Project** in the prolific Timmins, Ontario gold camp.

Key Asset: FRANKFIELD EAST GOLD DEPOSIT

- The centrepiece of the North Timmins Gold Project is the **FRANKFIELD EAST GOLD DEPOSIT**, with its growing high grade resource: Current NI 43-101 resource – 1.2 million (mm) ounces (oz.) of +6 g/t gold (348,000 oz. indicated plus 839,000 oz. inferred).

Multi-million ounce gold potential

- Gold mineralization continuity to surface; multiple parallel gold structures throughout deposit
- Open to depth and laterally
- Discovery Cost: Less than \$10/oz
- Other targets in the 60 sq. km, under-explored land package

Executing Aggressive Development Plan

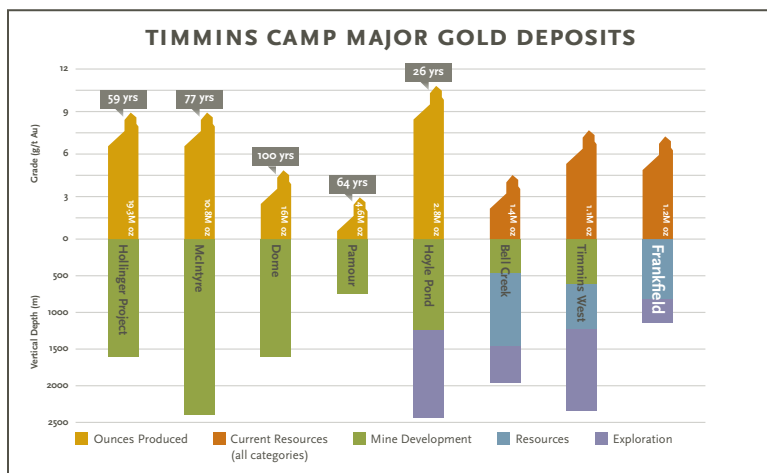
- Robust Preliminary Economic Assessment (Nov., 2011)
- Pre-Tax Net Cash Flow (Assumes US\$1,200/oz gold): \$265 million; IRR: 23%; Payback: 3.3 years
- Initiate mine development plans

Ongoing Drill program

- 17,000m resource expansion at Frankfield East Deposit
- 7,000m of ongoing regional exploration work

Potential for Fast Track Development

- Timmins, Ontario Gold Camp (70 mm oz historic gold production)
- Part of Abitibi Greenstone Belt (est. 48% of all gold in Canada)
- Experienced exploration & mine building team
- Short term contract processing opportunities



Gowest Gold Ltd.

80 Richmond Street West, Suite 1400
Toronto, ON M5H 2A4

T 416.363.1210

F 416.363.2959

TF 1-877-363-1218

info@gowestgold.com

Capitalization:

52-Week High/Low – C\$0.42/\$0.16

Recent Price – C\$0.21

Shares Outstanding (basic) – 123.2 million

Shares Outstanding (fully diluted) – 141.5 million

Average Daily Volume – **175,000 shares**

Market Capitalization – **C\$26 million**

Cash – **\$3.0 million**

Debt – **Nil**

Contacts:

Greg Romain, *President & CEO*

T 416.363.1210 ext. 205

gregr@gowestgold.com

Greg Taylor, *Investor Relations*

T 905.337.7673 / C 416.605.5120

gregt@gowestgold.com

Experienced Management Team:

MANAGEMENT

Greg Romain, *President & CEO*

Janet O'Donnell, *CFO*

Darren Koningen, *VP Technical Services*

Randall Roussain, *Project Coordinator – Exploration*

Kevin Montgomery, *Exploration Manager*

Garth Wilcox, *Project Manager – Engineering*

DIRECTORS

Fraser Elliot, *Chairman*

Greg Romain

Larry Phillips, *Chair of the Governance Committee*

Ewan Mason, *Chair of the Audit Committee*

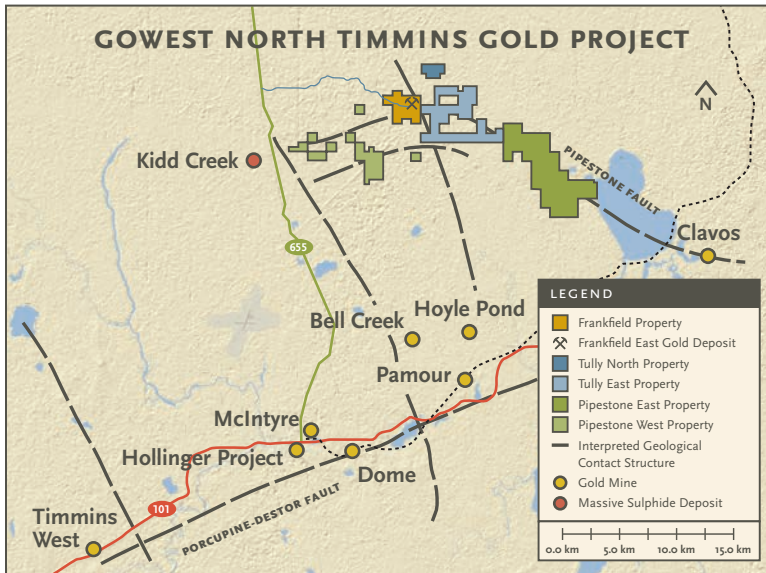
Jeremy Niemi, *Chair of the Compensation Committee*

ADVISORS

James Gill

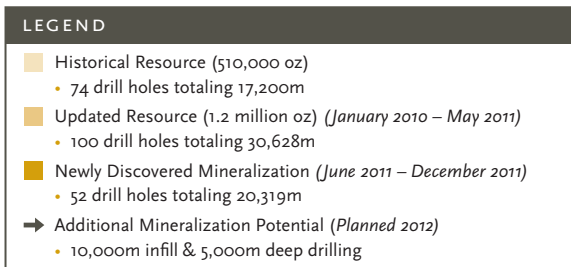
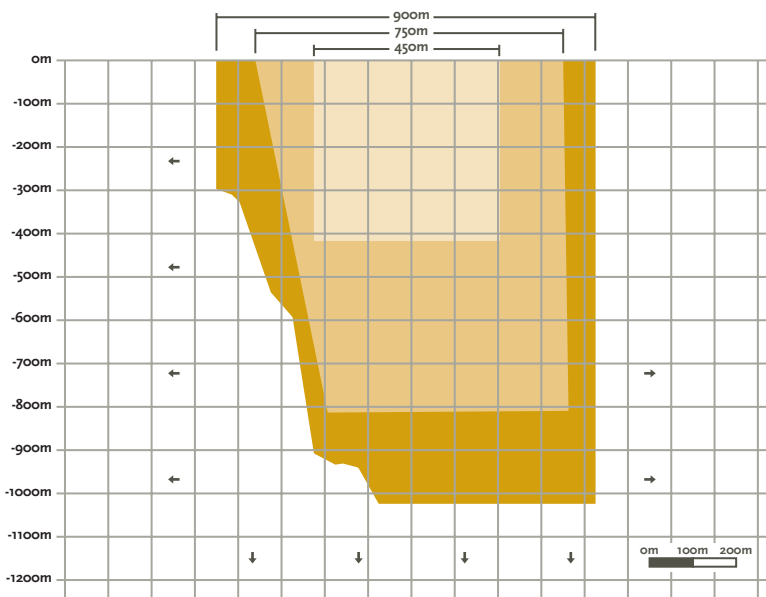
Ronald Bradshaw

Tom Obradovich



FRANKFIELD EAST GOLD DEPOSIT RESOURCE: SIGNIFICANT EXPANSION POTENTIAL AT DEPTH

Numerous gold deposits are presently being developed or explored in the Timmins/Abitibi Gold district, which are much deeper than the depths (+900m) currently being drilled at Frankfield.



Key Mining Personnel:

Darren M. Koningen, PEng
Vice President, Technical Services

Mr. Koningen is a professional engineer (metallurgy) with 20 years of international mining experience. Most recently, he was Vice President of Project Development for Castle Gold Corp. where he directed the design, construction and commissioning of two operating and profitable gold mines within the last 5 years.

Randall Roussain
Project Coordinator – Exploration

Mr. Roussain has spent over 35 years working in the Timmins Gold Camp. He was intimately involved with the discovery of the Bell-Creek-Marhill-Vogel deposits with Canamax and the prized 1060 Zone with Kinross, now being mined by Goldcorp. He is experienced in all phases of surface exploration and underground work in the development of a mining property.

Larry Phillips
Director & Chair of the Governance Committee

Mr. Phillips was most recently the Executive Vice President, Corporate Affairs with IAMGOLD Corporation. Mr. Phillips was one of the original founders of IAMGOLD and served as an officer and Director of the company from 1990 until the company became a public listed company in March 1996 when he held the title of Vice President, Corporate Development.

Ewan Mason, MBA
Director & Chair of the Audit Committee

Mr. Mason was formerly head of mining investment banking at a large Canadian securities firm and has worked in the financial sector for 17 years. Prior to that, he was employed as a geologist with a number of Canadian and international mining companies.

Jeremy Niemi, BSc
Director & Chair of the Compensation Committee

Mr. Niemi is a Consulting Geologist with over 15 years experience in the exploration and mining industry. Mr. Niemi is currently the Director of Exploration for GBU Capital Corp., prior to which he served as Vice President of Geology with Noront Resources. Before joining Noront he was Manager Technical Services for Kinross Gold. He graduated with a Bachelor of Science from Laurentian University in 1996.